



WELCOME

A note from the
Managing Director,
-STEVE O'DEA



Steve O'Dea

LIZ SCHUMACHER,
DIRECTOR MENTAL HEALTH & ABI

Liz has more than 16 years experience working within the NHS/Social Services and independent sectors. Liz's clinical and senior management background includes a related Professional Mental Health Nurse qualification from the Nightingale Institute Kings College London, a Degree in Mental Health from Greenwich University and also NLP practitioner status. More recently Liz was the Locality Manager for Mental Health & Older People's Services (Lead Nurse & Designated Officer for Vulnerable Adults) for a Health Care Trust in Northern Ireland. Liz has day-to-day operational responsibility of the activity for all the Mental Health and Acquired Brain Injury services in European Lifestyles.

MARTINA KADEK, GRADUATE MANAGEMENT TRAINEE



Martina has joined European Lifestyles as graduate management trainee. She completed her MSc Management, specialising in Marketing at Cass Business School, City University London. "I got so much help and support during my work placement. It was a valuable experience for me to work

alongside the senior management team" said Martina. She also enjoyed visiting the homes and meeting service users. She looks forward to working with European Lifestyles. Martina will be involved in marketing activities with the marketing team in London.

Dear Team,

I would like to welcome you with the warmest greetings to the first European Lifestyles newsletter.

The aim of the newsletter is to enhance communications and awareness across the Group. As our services continue to receive regional and national recognition, we are endeavouring to maintain effective communication and building awareness of the rich life and achievement going on around the organisation and its community.

We are extremely pleased to announce that European Lifestyles has been recognised by Investor in People. Our Group philosophy and our core value is person centredness. This is both a foundation and the stepping stone for us to work in partnership and to continually improve the quality of our services. I would like to thank all of you for your hard work and dedicated contributions.

We are continually working towards improving services supported by investment in training and the development of all of our staff. We will strive together in partnership with those we support to deliver a personalised approach towards an independent life for each individual with whom we engage.



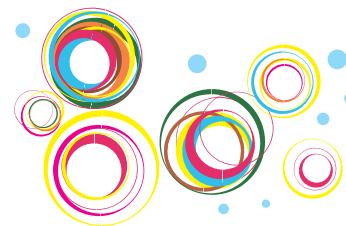
DI PRANDLE
RETIREMENT

Di Prandle, Head of Group Compliance retired from the Group on 14th May. Di was thanked in a formal presentation and received gifts and flowers from colleagues, for her contribution to the work of the Group. She will be missed by all her colleagues, who wished her good luck on her future endeavours and travels.



Compliance team (L to R)
 Paula, Di and Gemma





Justin is one of our residents at the New Horizon Centre in Taunton. 15 year old Justin decided to take on Three Peaks Challenge this year. This involved conquering the highest mountain peaks in England, Scotland and Wales. Justin took up this challenge as part of a fund raising drive and all the proceeds will be donated to Breast Cancer Charity.

Justin successfully climbed all three peaks – Snowdon, Scafell Pike and Ben Nevis – having combined height of 3,407 metres, and raised more than £3000 for the charity.

Having conquered the Three Peaks, Justin has set himself a new challenge – climbing the highest mountain in the African continent, Mount Kilimanjaro (5,893 metres). He intends to undertake his new challenge later this year.

Justin would like to thank everyone for their kind donations. If you would like to find out more about Justin's progress, or would like to donate to this worthy cause, please visit:

www.justgiving.com/Justin-Henwood



Justin's Three Peak CHALLENGE



Ben Nevis, Scottish Highlands

'Outstanding' CORNERSTONE

Congratulations to the Children's Services team at Cornerstone who have successfully achieved the "Outstanding" award from Ofsted for the third consecutive year. To gain such a prestigious award places the organisation in pole position in terms of future referrals and sends out a strong message to placing authorities.

Local Authority commissioners and Service Leads will be fully aware as to our position which again gives us an advantage over other providers.

The team of registered managers, led by their Head of Services Margaret Hanney, are extremely proud of their achievement. Divisional Director Kev Dowd would like to compliment each and every member of the team.

Cornerstone Children's team continue to look forward to the forthcoming year working closely with the wider Lifestyles divisions to maintain their "Outstanding" awards.



(L to R): Emeline Evans (*Registered Manager*), Nick Mellor (*Registered Manager*), Lysie Smith (*Registered Manager*), Nadia Shaladan (*Registered Manager*), Margaret Hanney (*Head of Services*), Debra King (*Registered Manager*), Kev Dowd (*Divisional Director – Children's Services*), Anna Williams (*Registered Manager*) and Helen Jones (*Registered Manager*).

"Congratulations to the Children's team at Cornerstone on their achievements"





Supporting you to live the life you choose

Rawcliffe's Adventure

What seems like a simple task, of arranging a camping trip, is an adventure on its own when trying to meet the needs of 4 very individual young men with Autism. The first task was to find a perfect place, and we chose from the picturesque countryside of Wales, Tyn Rhos, a charming family run establishment in Trearddur Bay. Staff then set about assessing all the risks, which involved - taking a trip and recording any possible complications, we might face.

The biggest obstacle to overcome was that two of the boys, had very different needs. Suitable strategies were put in place to avoid any clash. So, before we knew it we were on our way to Wales. We finally arrived and put the tents up, which was an ordeal by itself.

Over the next two days we enjoyed campfires, outdoor meals, paddling on the beach and visiting the local castle. Soon it was time for our little adventure to end. Homeward bound everyone relaxed, day dreaming of our little holiday, proud of our achievements and the success of careful planning.



Congratulations to Matt and the team.



"I really enjoyed my time at Sainsbury's, the staff there were great and were always very helpful"
- Andrew Blackburn

Work experience with

Andrew Blackburn

Back in February 2010, Andrew Blackburn of Crewe went along to Sainsbury's in Nantwich for three days work experience. South Cheshire College in Crewe arranged the project as part of the students work placement. *"Every day I caught the bus to Nantwich and then back to Crewe when I finished work"*.

"One day I was working in the warehouse and on another day I was on the shop floor, helping customers pack their bags"

"I really enjoyed my time at Sainsbury's, the staff there were great and were always very helpful", said Andrew.

Andrew has also been doing some conservation work recently with housemate Mathew Chesters for voluntary organization BTCV. Together they dug holes for posts on a farm in Northwich and laid paths for a school in Thornby. If you would like to do some volunteer work BTCV are always looking for new volunteers for a worthwhile cause.

Involvement in Liverpool's
year of

Health & WELLBEING



Liverpool City Region is promoting 2010 as the year of health and wellbeing. **There are five ways that we can take part in that proven to have positives outcomes for our health and wellbeing.**

1. Connect 2. Be active 3. Take notice 4. Keep learning 5. Give

By building these actions into your daily life can contribute 7, 5 more years to your life. European Lifestyles is trying to become involved in the year of health and wellbeing by sign up our events and activities to the website.

We would like to ask for your participation to involve in helping other people to achieve a longer life expectancy. For more information: please visit the website: www.2010healthandwellbeing.org.uk





St Patrick's Day Celebration at Minffordd



St Patrick's day was celebrated in style this year at Minffordd!

Activities co-ordinator Alison organized an arts and crafts group to make decorations for the dining room wall.

Helen and Emlyn helped to make an Irish tricolour (the flag of Ireland) and a very realistic looking Leprechaun! Staff drew pictures of the leprechaun, rainbow and pot of gold and Helen and Emlyn used different coloured tissue paper which they scrunched up and stuck to the pictures with glue. The pictures were exhibited on the dining room wall and drew admiring glances from all!

'Team Steve'



Steve O'Dea, Managing Director of European Lifestyles, will be participating in a sponsored cycling event to raise funds for research about Dementia. The funds raised will be used to sponsor academic research at Oxford and other Universities.

The 2 day event sets off from the EU Capital of Bratislava (Slovakia) and ends at Vienna (Austria). His co-participants include Sir John Hanson and Sir John Grimley Evans, trustees of social care think tank RESEC (Research in Elderly and Specialist Care).

Your support is greatly appreciated. Please send all donations (cheques/cash) to: Terry Mills, Financial Controller, European Lifestyles, Sefton Park Road, Liverpool L8 0WN.

Claire Birchall



Claire has 10 years of HR experience. Claire graduated with a Business degree from university.

Claire's HR background includes working with Liverpool Daily Post and Echo in an administration role. She then joined Ethel Austin Ltd, a value fashion retailer as HR Advisor progressing to HR Manager. She spent 9 years with this employer and ended in redundancy as the company went into administration.

Now she has moved on to a complete new sector of industry, as Senior HR Officer for European Lifestyles, where she hopes to transfer and add to her skills and experience.

Rachel Pounder

Rachel worked for 16 years in civil service (*Jobcentre Plus*) in a variety of roles including managing large scale recruitment campaigns, various one off projects such as Jobs fairs and improving customer service standards. In September 2003 she returned to full time education to complete a degree in Human Resource Management at University of Liverpool.

In addition she worked part time at Liverpool John Moores University (LJMU) within the Student Recruitment Team. Following her degree

she worked at Edge Hill University within the HR Department with responsibility for the management of information and recruitment of all staff across the organisation.

Rachel is now currently completing an MA in Personnel and Development at LJMU.



We hope that you enjoy our first newsletter. We would like to thank for all your help with our first newsletter. If you have any ideas, stories, achievements, artworks and events that you would like to share with us, please send them to martinak@europeanwellcare.com. We look forward to hearing from you all.